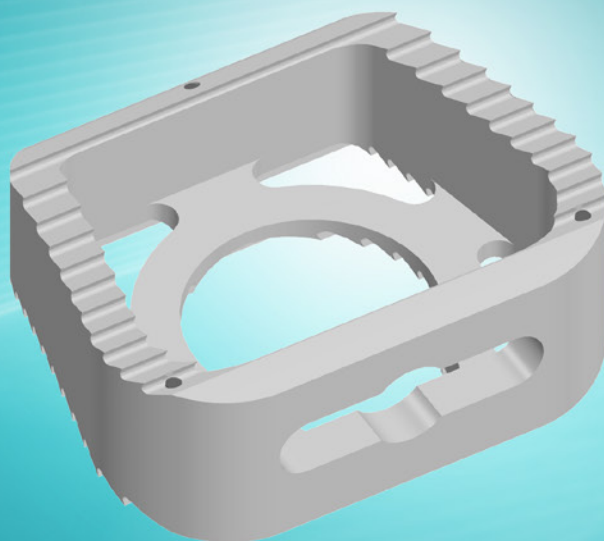


spacevision™

Anterior Cervical Interbody Fusion

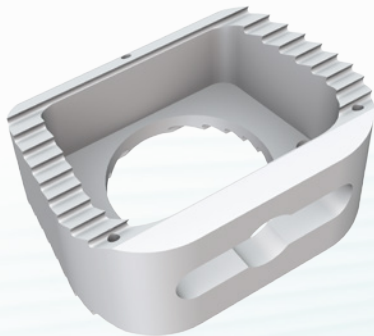


Speed & Simplicity



SpineVision®
Innovation that matters

Speed & Simplicity



Wide opening and anterior window

With more than 60% of graft window, SpaceVision™ ACIF cage offers one of the biggest graft windows on the market helping bony fusion growth.

Anatomic shape with embedded markers

Comprehensive range include natural lordotic shaped cages (5° angulation) from 5mm height in its highest part to 9mm featuring anti-back-out teeth to provide good primary stability and radio-opaque markers for precise follow-up.



Dual purpose Trial Device

- Acts as a reamer while surfacing endplates to precisely match cage profile
- Facilitates optimal cage size

distributed by



SpineVision®
www.spinevision.com

SpineVision S.A.
10 rue de la Renaissance
Bâtiment E
92160 Antony – France
Tel: +33 (0)1 53 33 25 25 - Fax: +33 (0)1 53 33 25 39
Belgium • France • Germany • Italy • United Kingdom • U.S.A.



See package insert for labeling limitation
Caution: Not available for sale in the U.S.A.